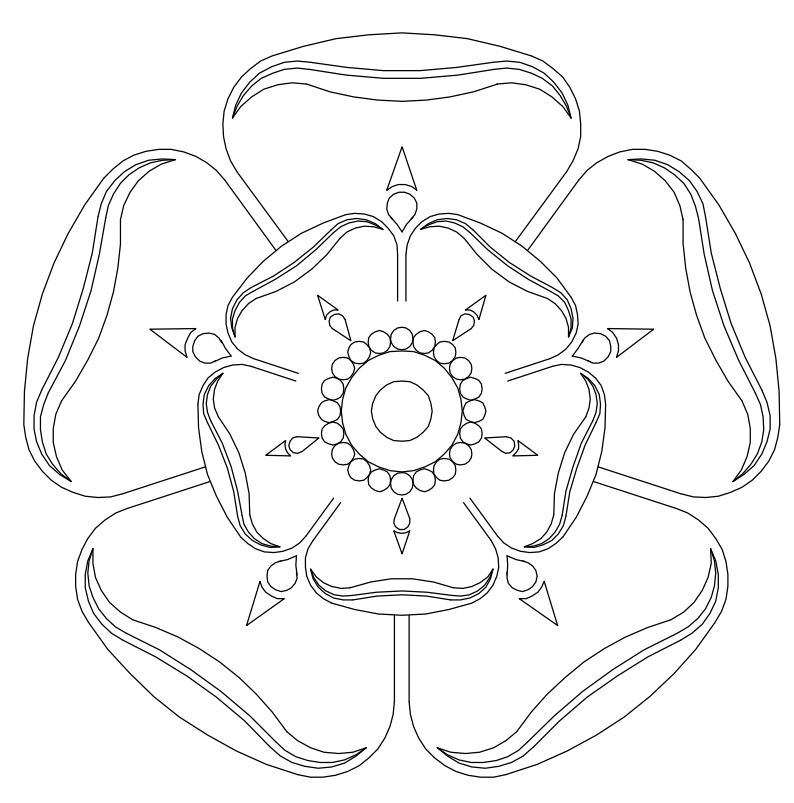
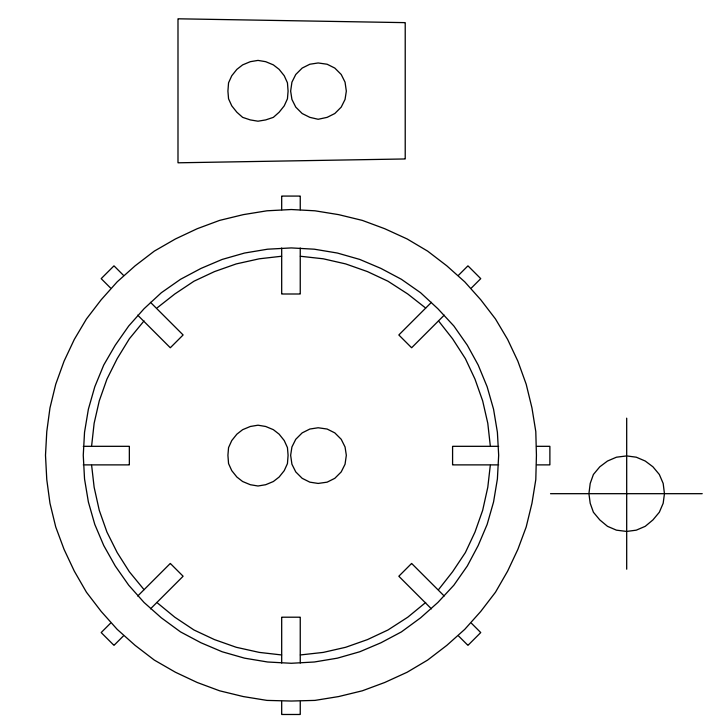


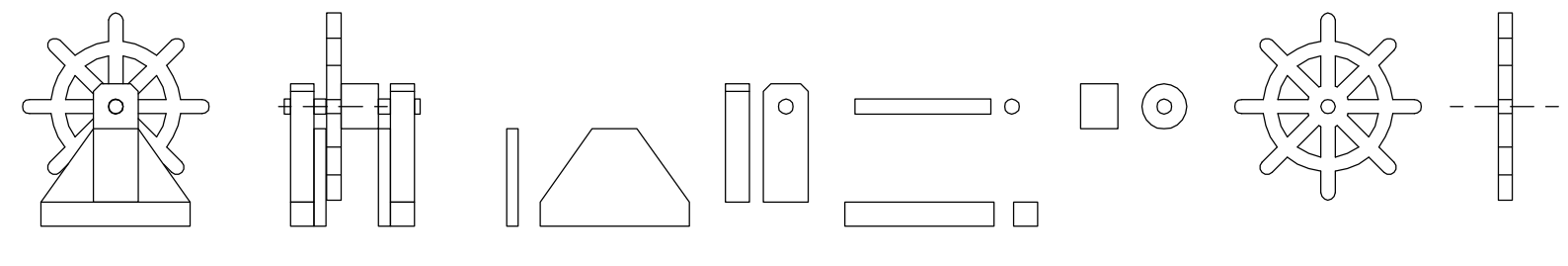
Cannon



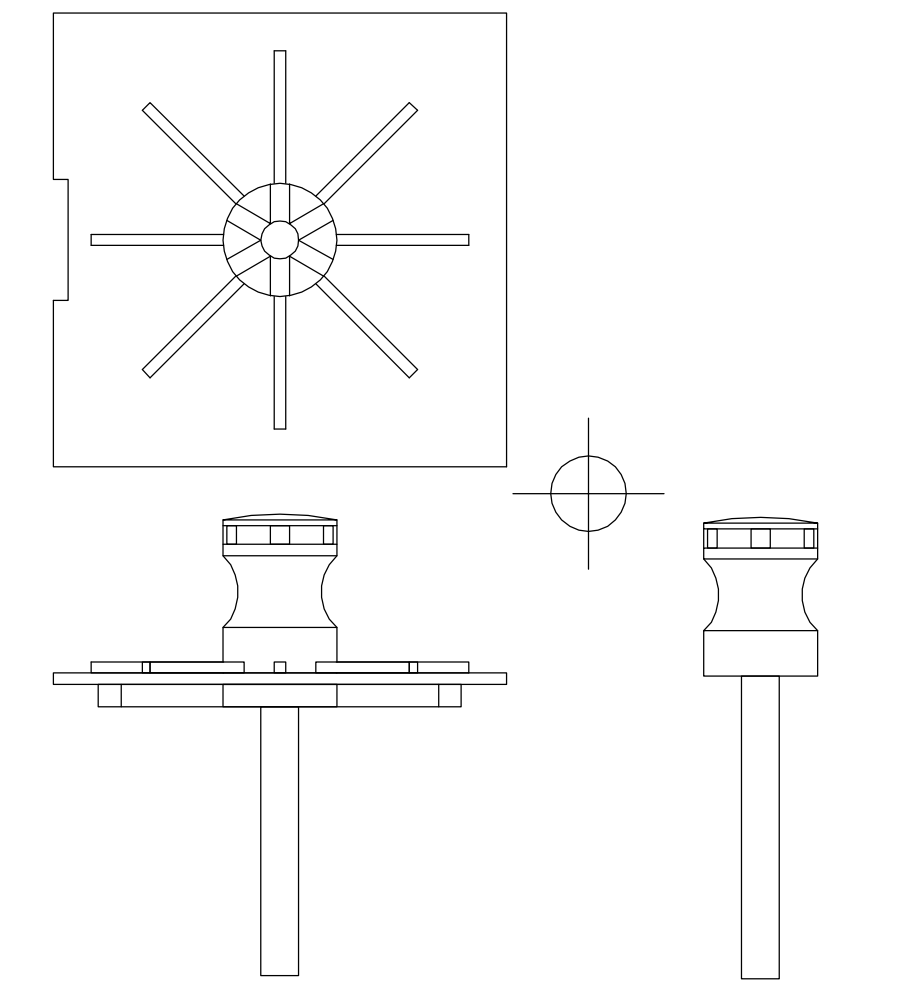
The Black Rose



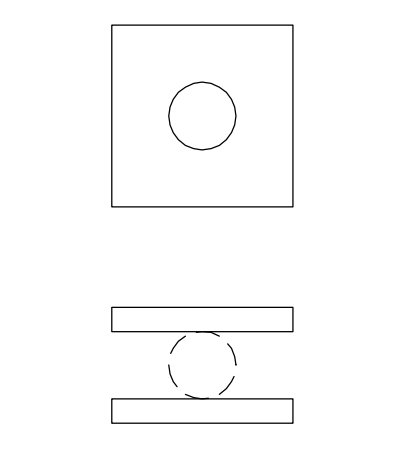
Main Crows Nest



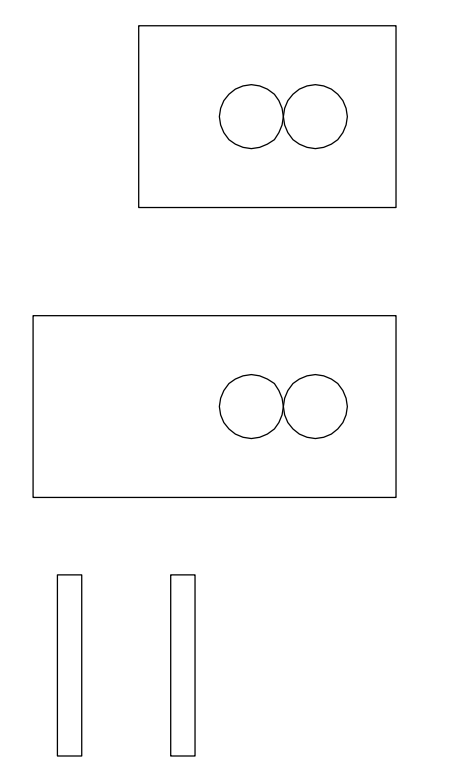
Ships Wheel



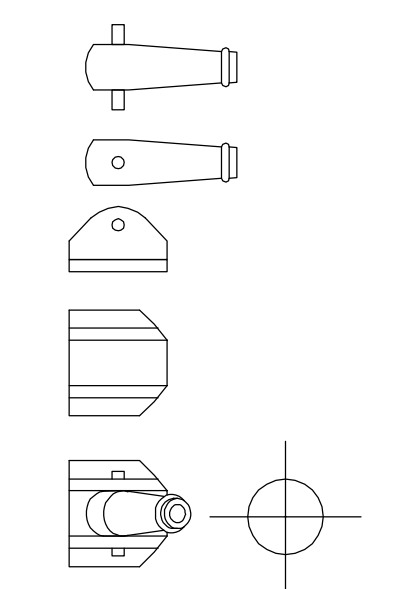
Capstan



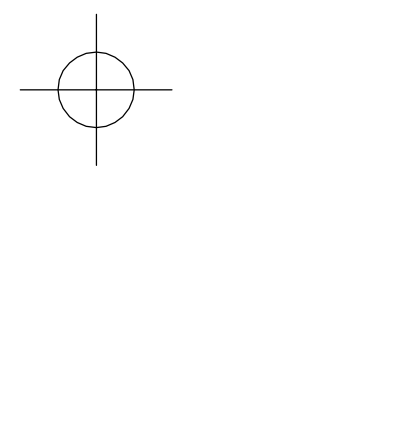
Aft Crows Nest



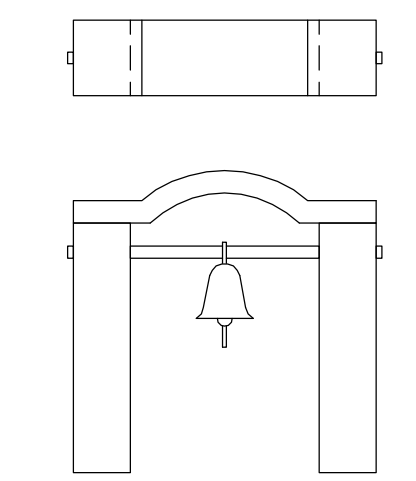
Fore Crows Nest



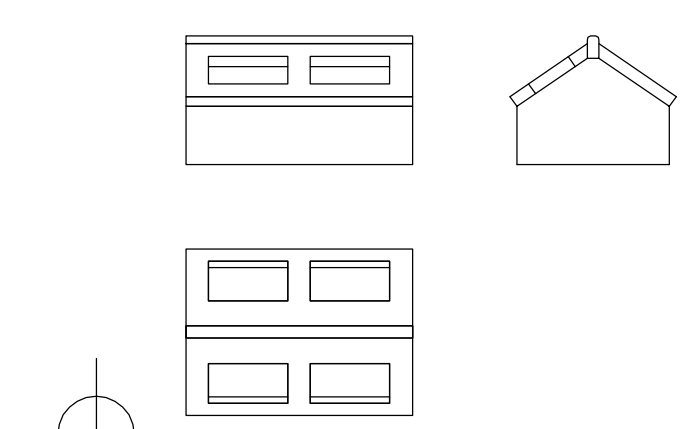
Long boat mortar



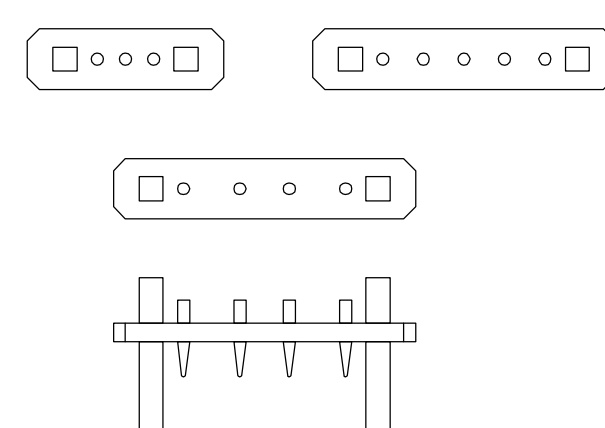
Cannon Ball store



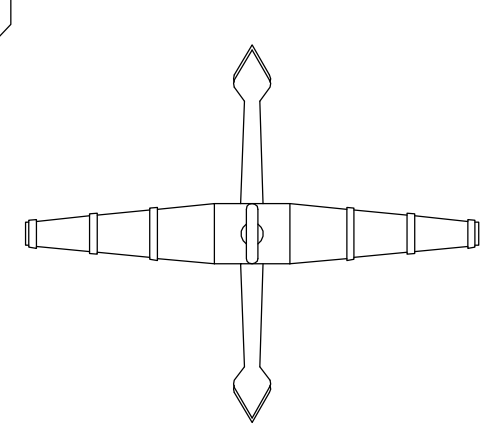
Belfry



Skylight



Belaying Pin Rail



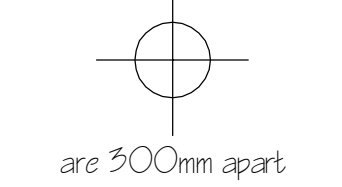
Anchors

Black Rose

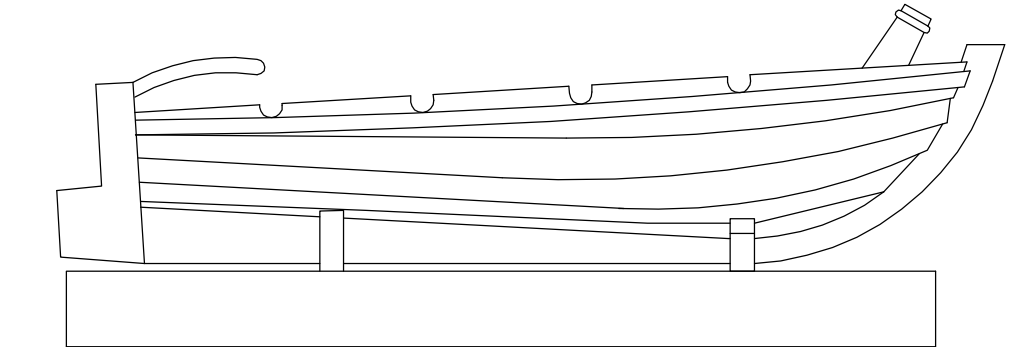
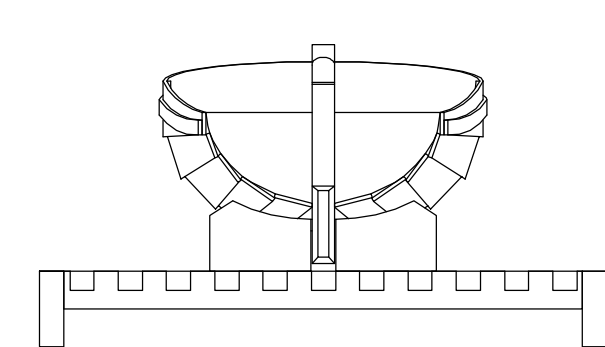
Designed for Mark Steele - Auckland - New Zealand

1/48th scale B1 size Drawings researched, designed & drawn by Harold H. Duncan - May 2010

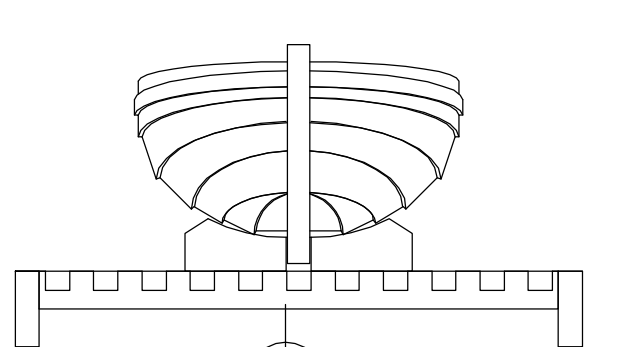
These registry marks

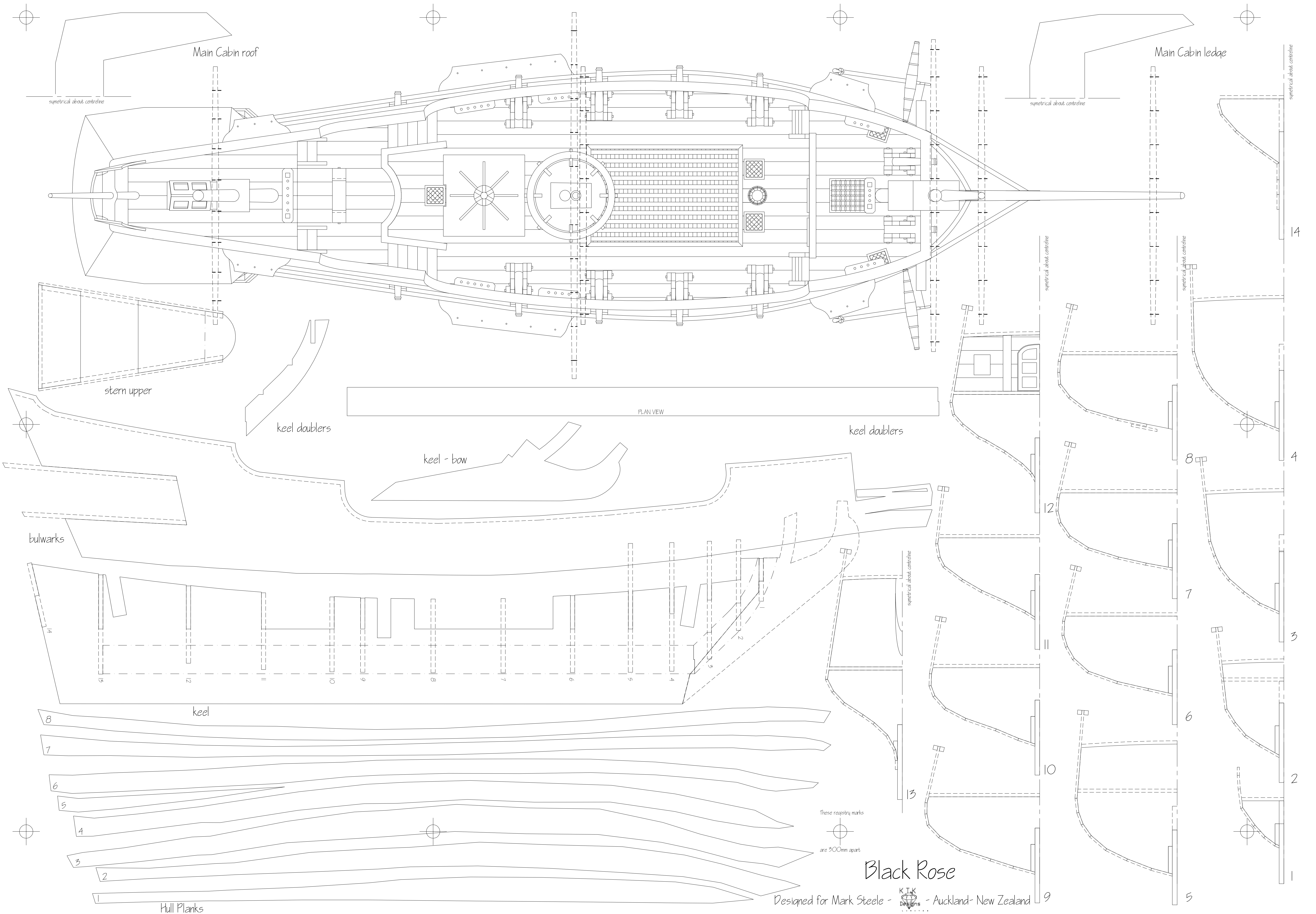


are 500mm apart



Long boat & grating





Main Cabin roof

Main Cabin ledge

PLAN VIEW

keel doublers

keel doublers

keel - bow

bulwarks

keel

Hull Planks

Black Rose

Designed for Mark Steele - Auckland - New Zealand

1/48th scale B1 size Drawings researched, designed & drawn by Harold H. Duncan - May 2010