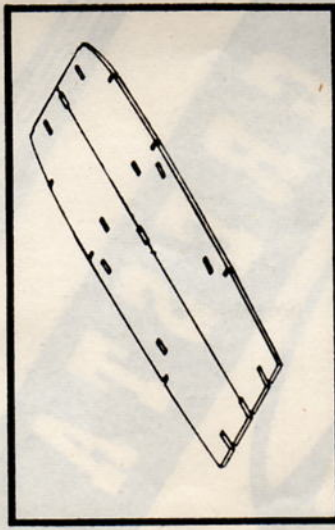
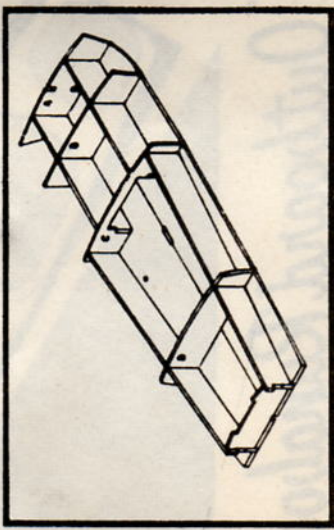


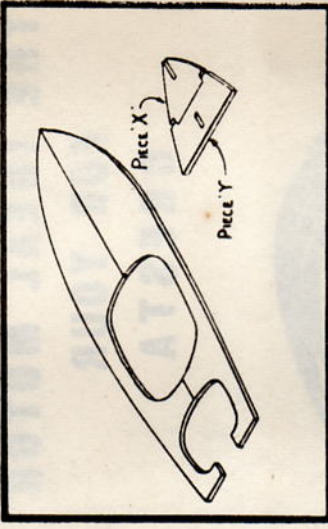
1. Carefully press all parts out from the printed and die-cut panels. Note that parts are not cut on the printed lines.



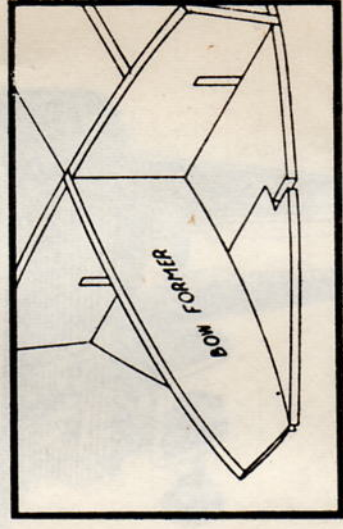
2. Cement together the cockpit floor halves and pin to a flat surface to set.



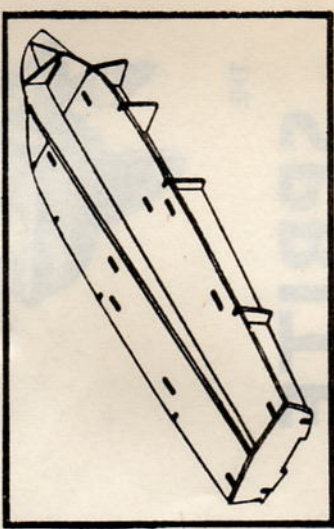
3. Stick the battery compartment sides and cockpit sides to the cockpit floor, followed by bulkheads A, B, C, D and the transom doubler.



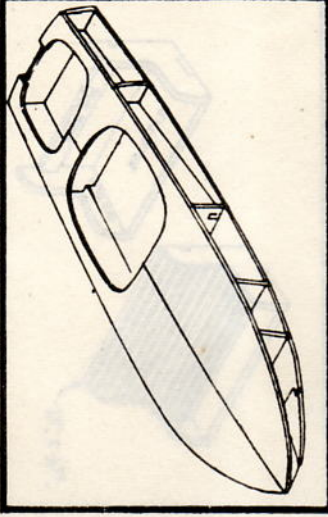
4. Join the two deck halves, also pieces X & Y pinning to a flat surface to set.



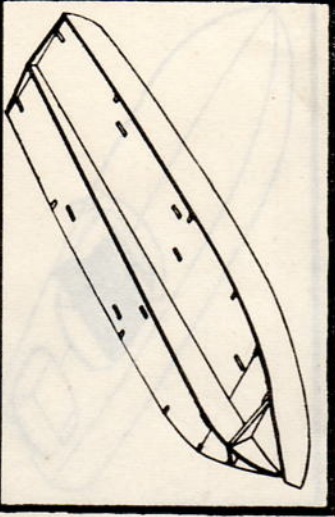
5. Cement the bow former and the piece X-Y assembly to bulkhead A.



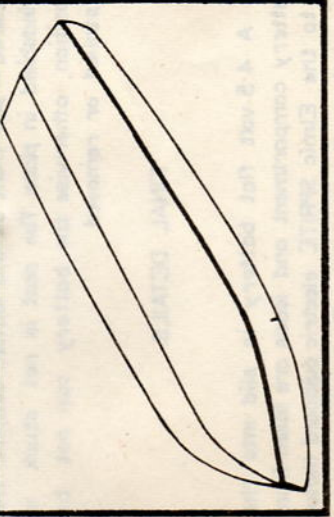
6. Add the transom to the rear and cement the keel and keel brace in position.



7. Cement the assembled deck firmly in place and sandpaper the model so that all edges blend smoothly with each other.



8. Cement one of the side skins in place, pinning as necessary. The front portion of the skin may be dampened to assist bending. Let this stage set thoroughly before continuing.



9. Trim the side skin to an exact fit then add the second skin in the same way. The bottom skins are applied in a similar manner.