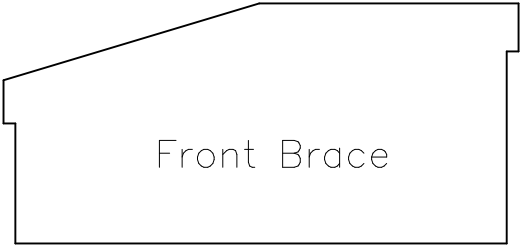
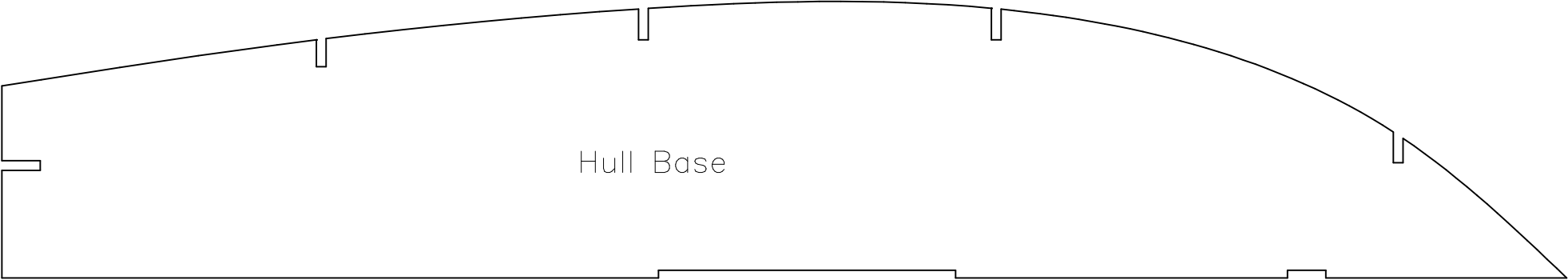


Curlew Sheet 1. 2 Required. 1/16" balsa

1 inch



Curlew Sheet 2. 2 Required. 1/16" balsa

1 inch

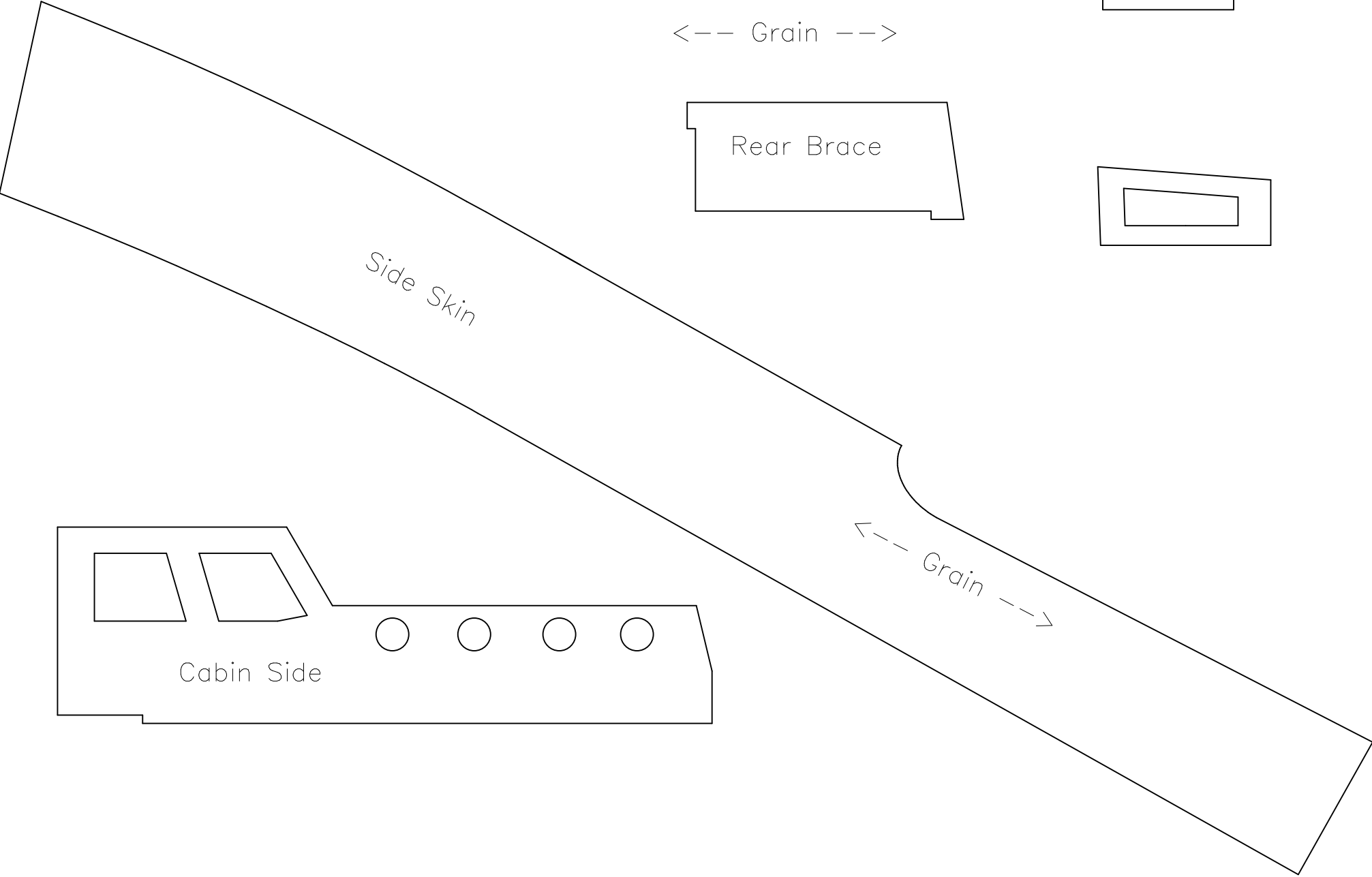


<--- Grain --->

Rear Brace

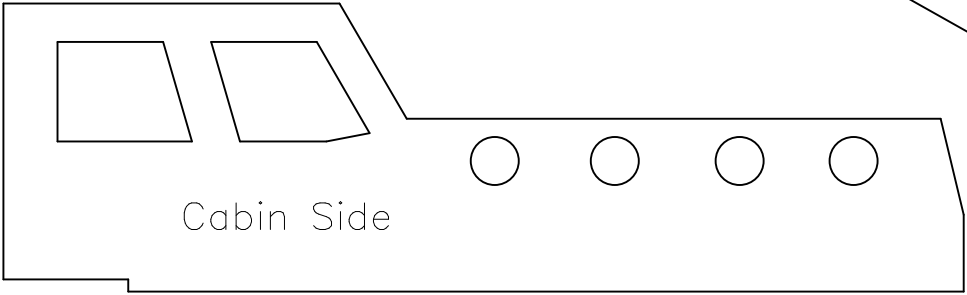


Side Skin



<--- Grain --->

Cabin Side

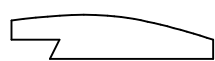
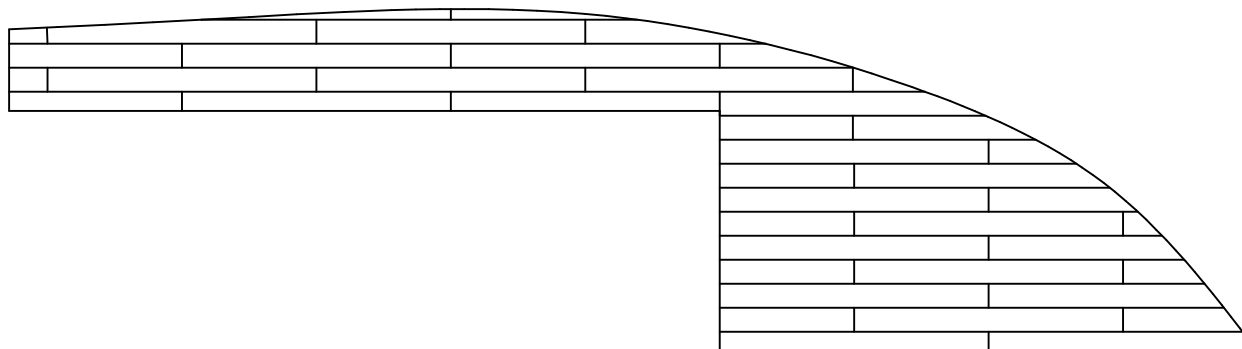
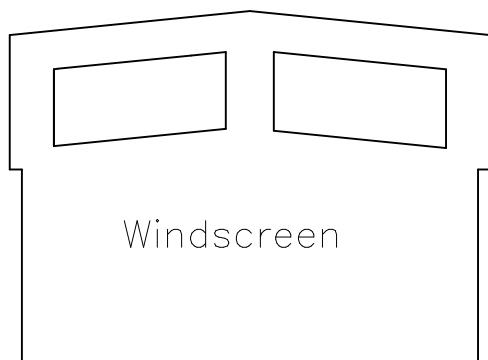


Curlew Sheet 3. 1 Required. 1/16" balsa

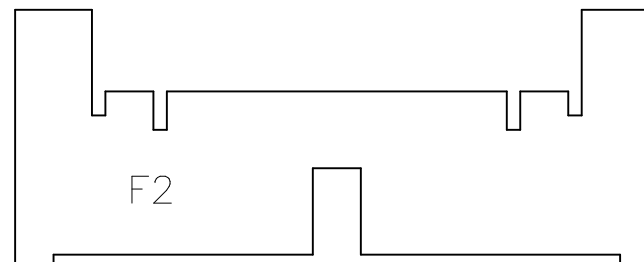
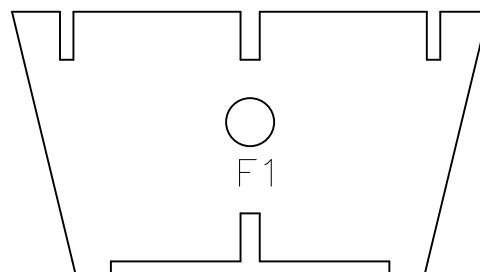
1 inch



<-- Grain -->



Mast

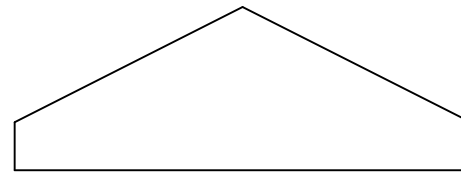
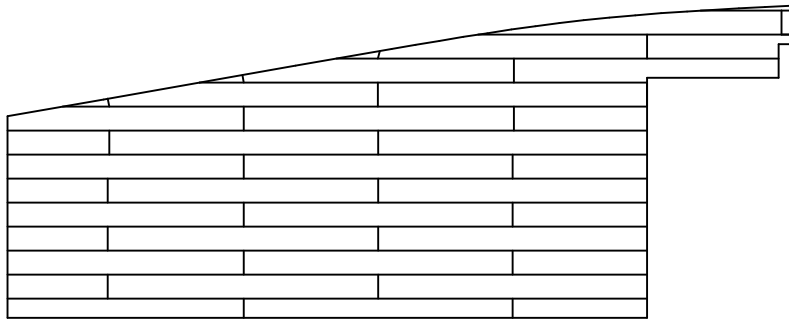


Curlew Sheet 4. 1 Required. 1/16" balsa

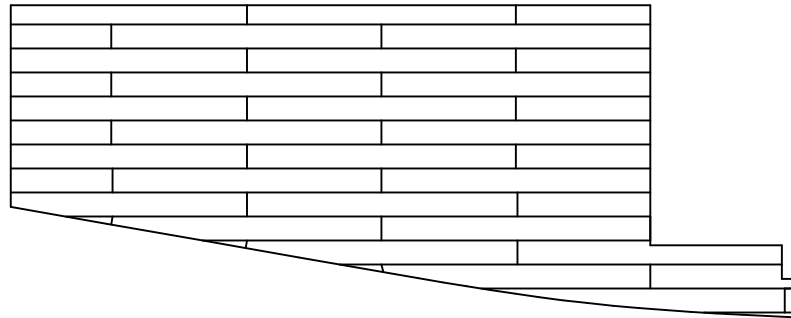
1 inch



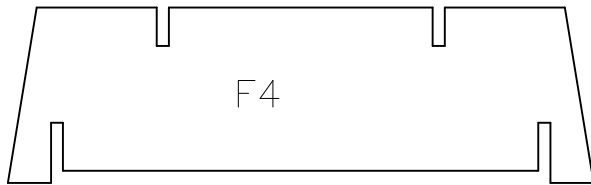
<-- Grain -->



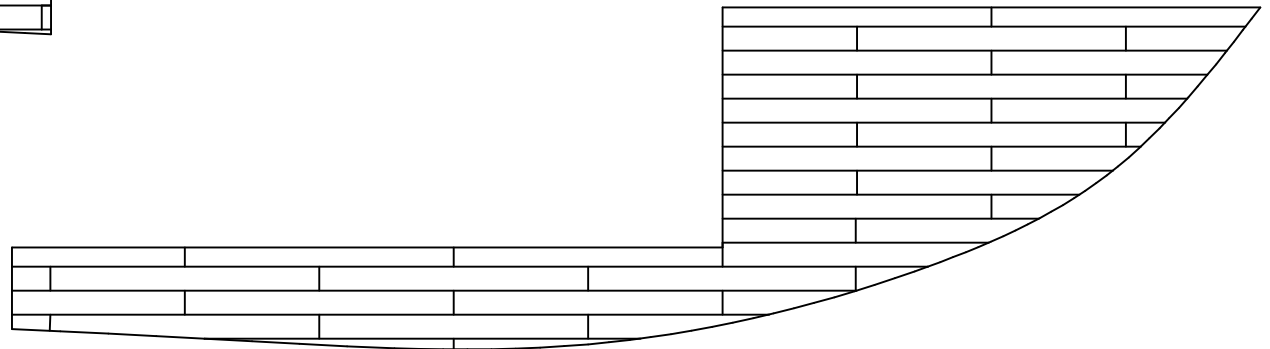
Cabin Front
Former



Rear Cabin
Roof



F4

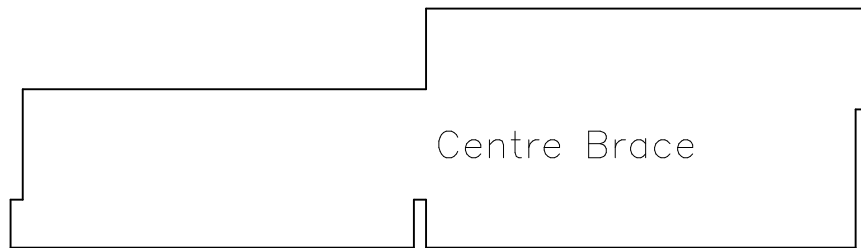
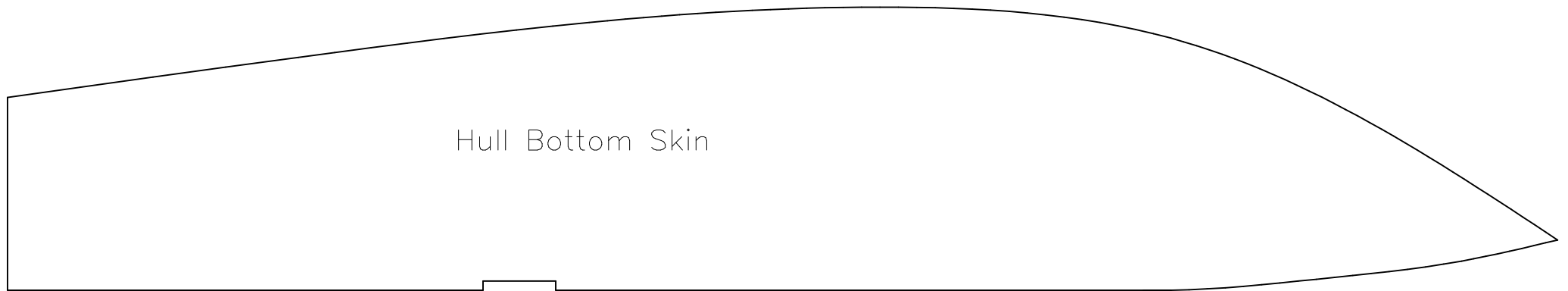


Curlew Sheet 5. 2 Required. 1/16" balsa

1 inch



<-- Grain -->



Curlew Sheet 6. 1 Required. 3/32" balsa

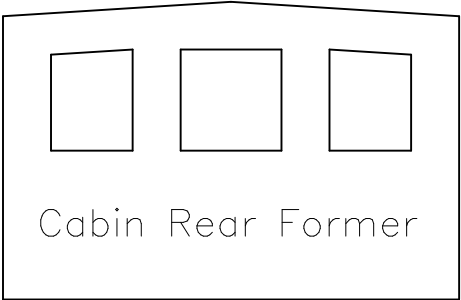
1 inch



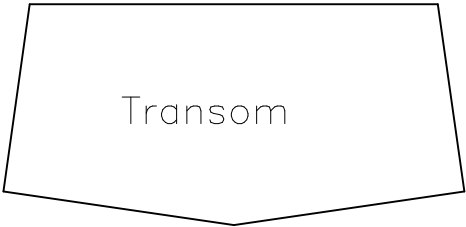
<-- Grain -->



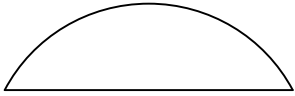
Motor Mount



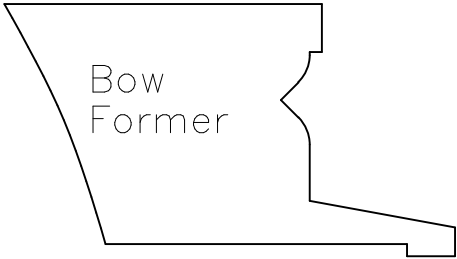
Cabin Rear Former



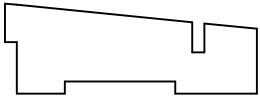
Transom



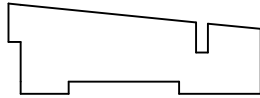
Tiller Support



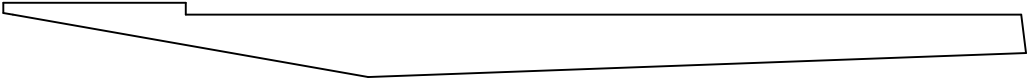
Bow Former



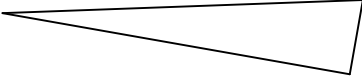
F3



Rear Inner Keel



Roof support



Front Outer Keel



Rear Outer Keel

Front Inner Keel

