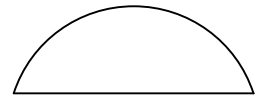
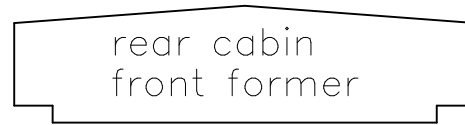


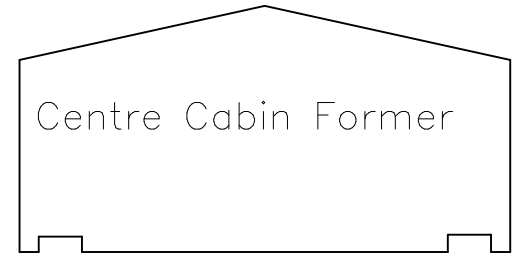
Mermaid Sheet 1. 1 Required. 3/32" balsa 1 inch



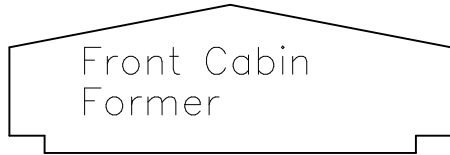
Tiller Support



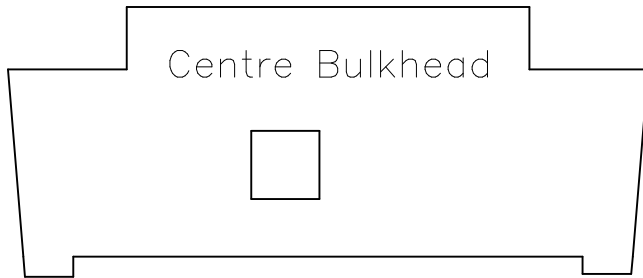
rear cabin front former



Centre Cabin Former



Front Cabin Former



Centre Bulkhead

Half Cabin Floor

<--- Grain --->

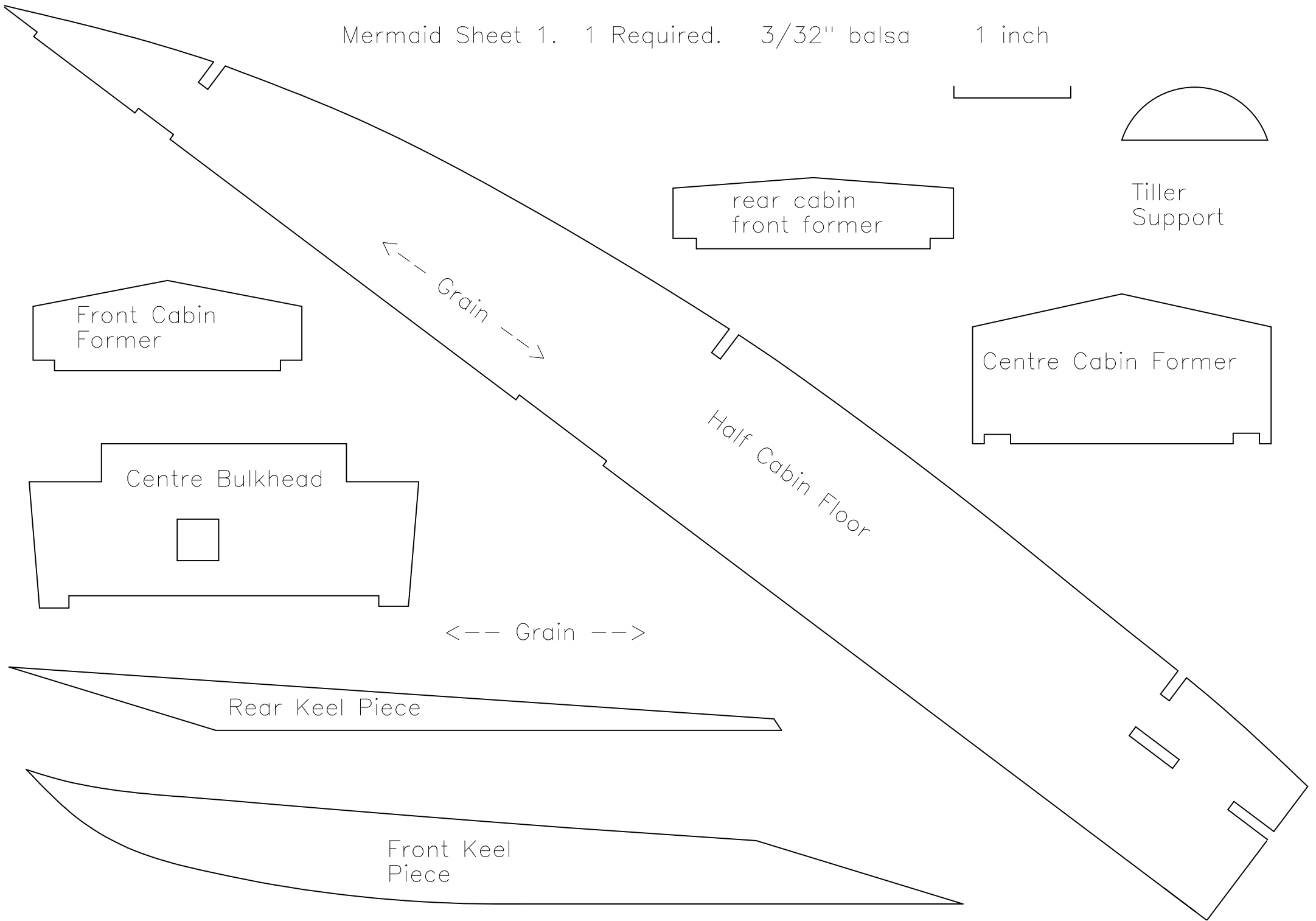
<--- Grain --->



Rear Keel Piece



Front Keel Piece



Mermaid Sheet 2. 1 Required. 3/32" balsa

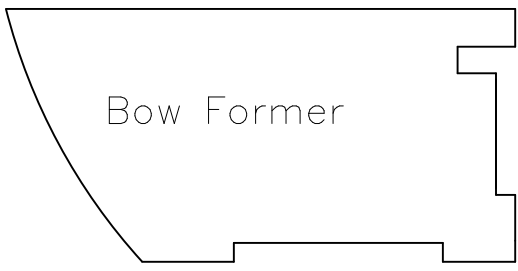
1 inch



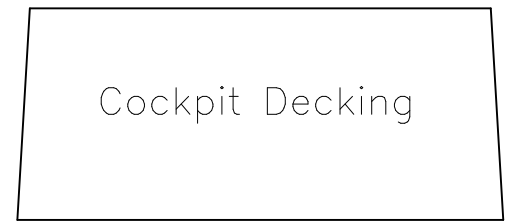
<-- Grain -->



Rear Cabin - Rear Former



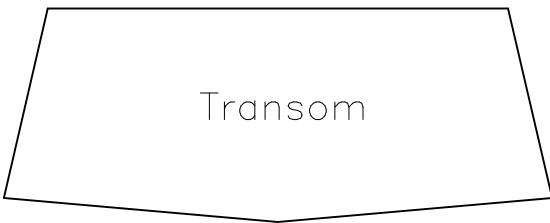
Bow Former



Cockpit Decking

<-- Grain -->

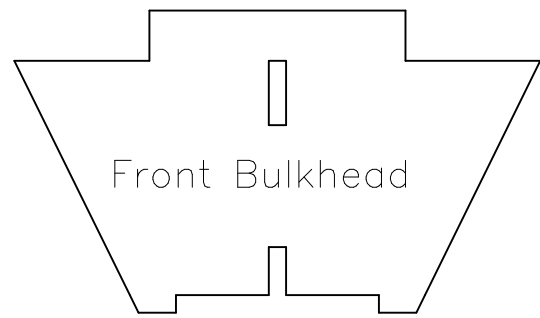
Half Cabin Floor



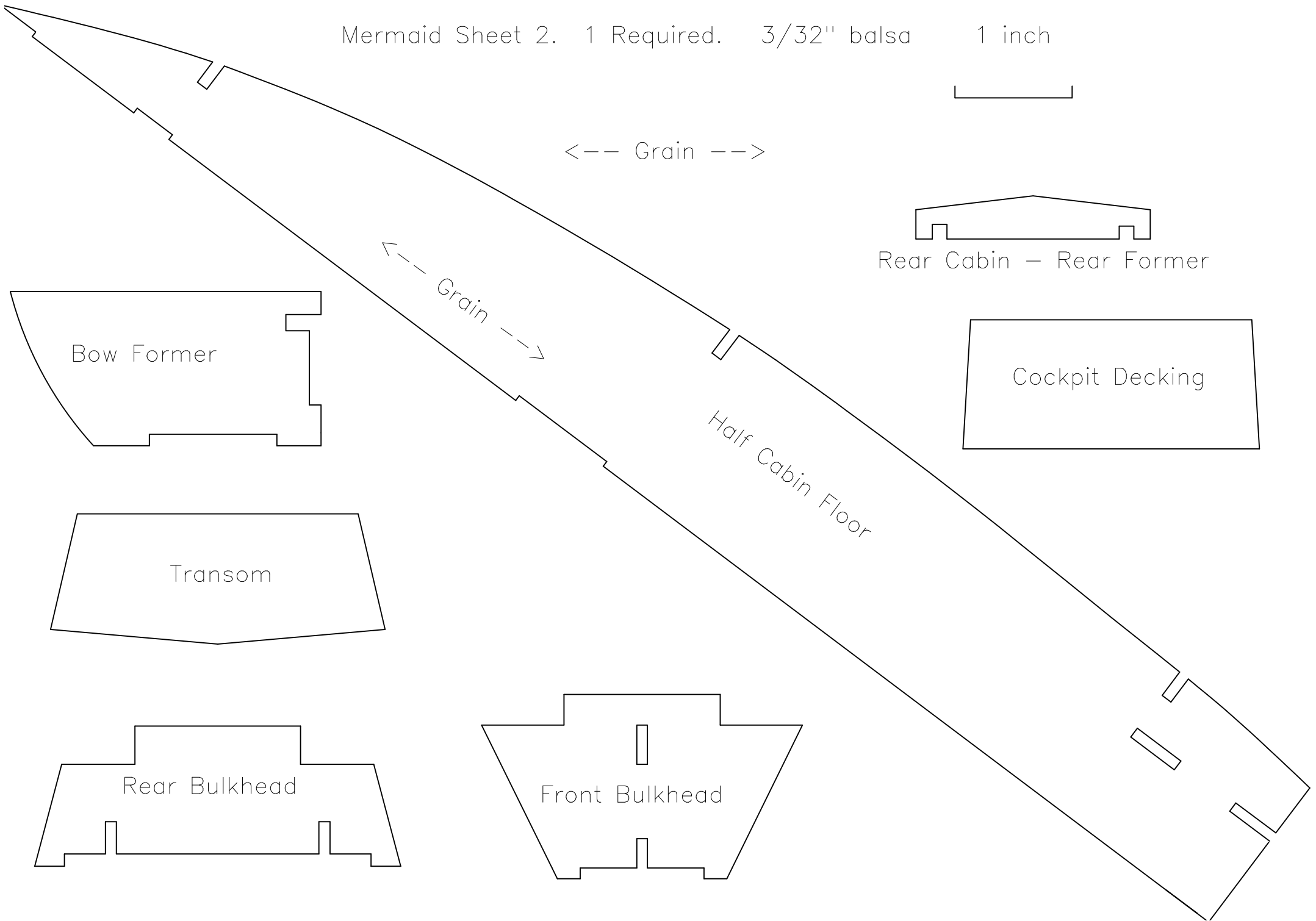
Transom



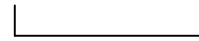
Rear Bulkhead



Front Bulkhead

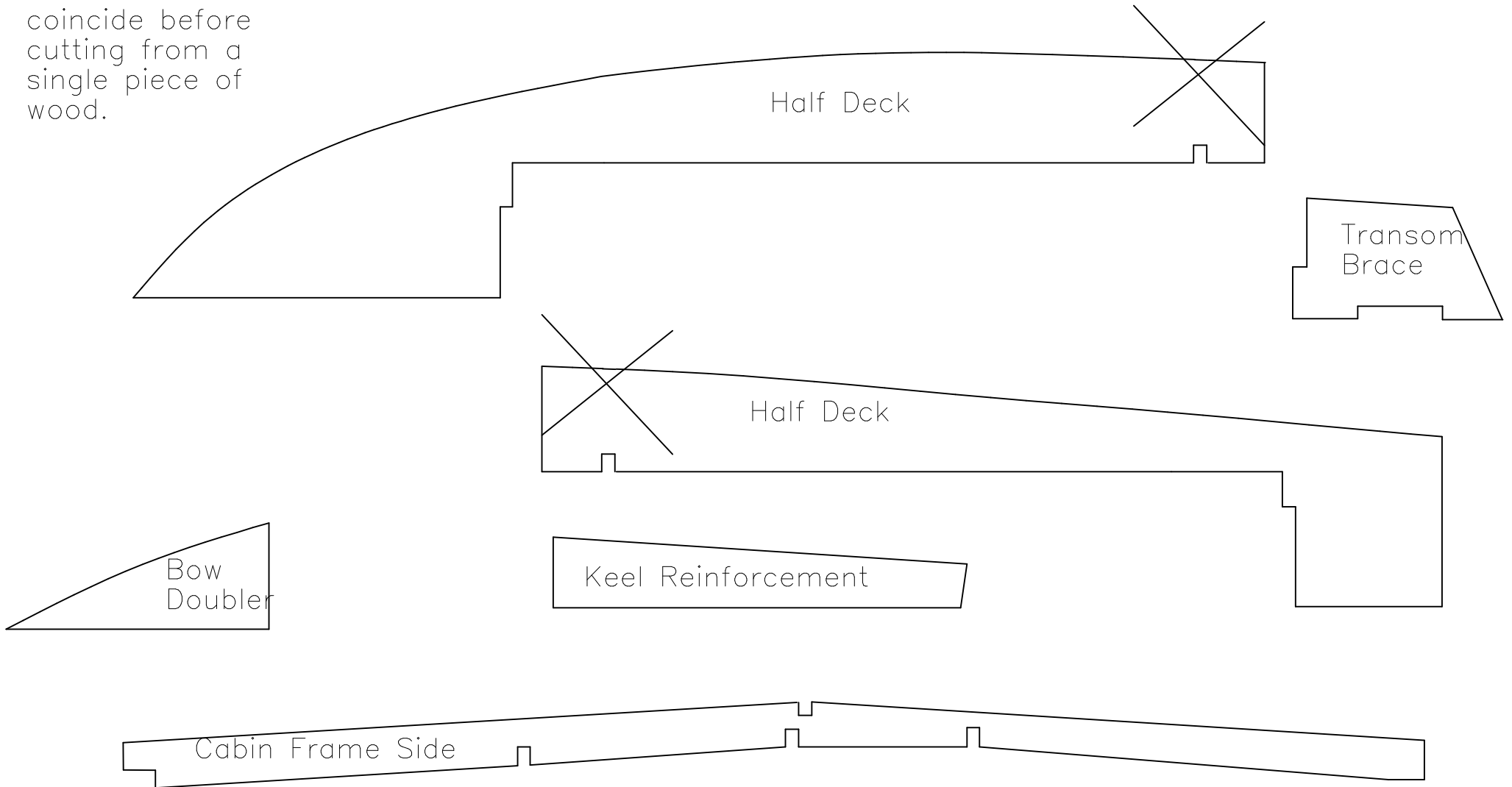


Mermaid Sheet 3. 2 Required. 3/32" balsa 1 inch



Join two parts of Half Deck drawing so that the crosses coincide before cutting from a single piece of wood.

<-- Grain -->



Join the two parts of the Side Skin drawing so that the crosses coincide before cutting from a single piece of wood.

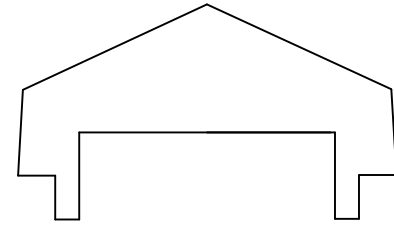
Mermaid Sheet 4. 2 Required. 1/16" balsa 1 inch



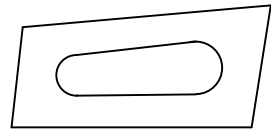
<-- Grain -->



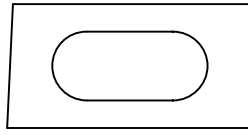
Wheelhouse Roof



Cabin Frame Front End

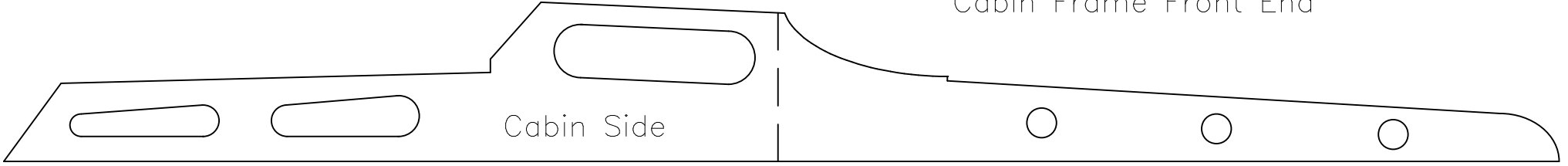


Wheelhouse Front

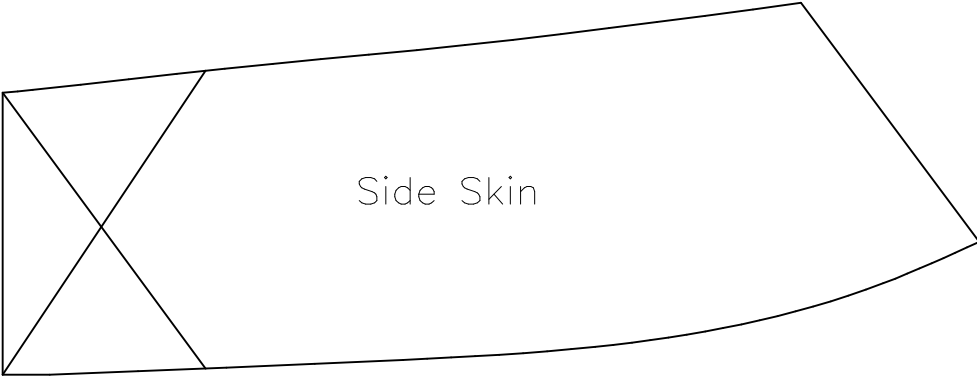


Cabin Front

Cabin Side will be scored and bent along dashed line



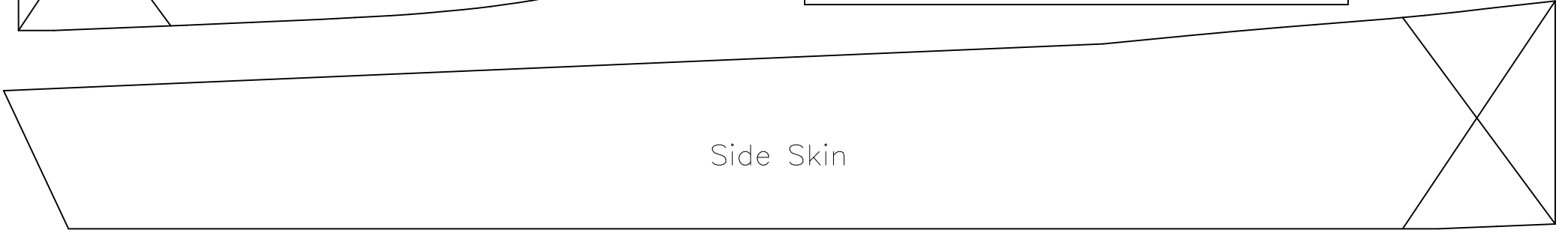
Cabin Side



Side Skin



Rear Cabin Roof

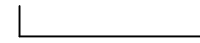


Side Skin

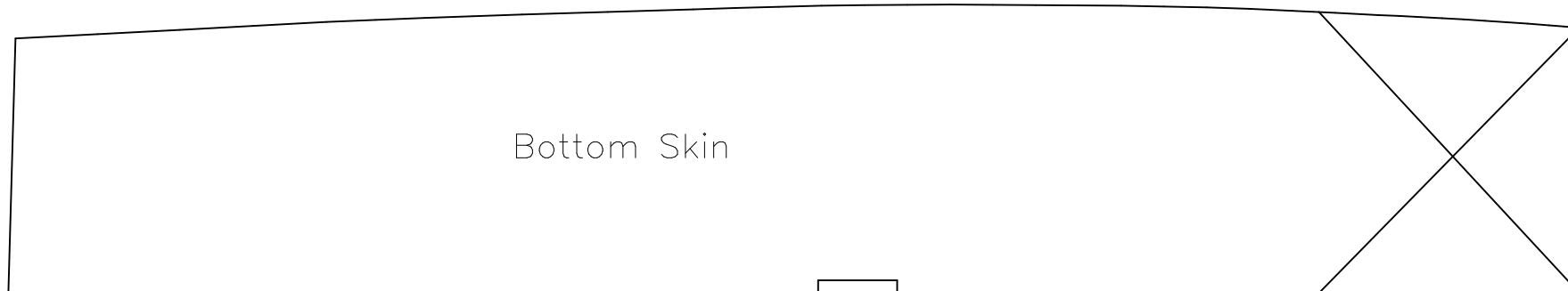
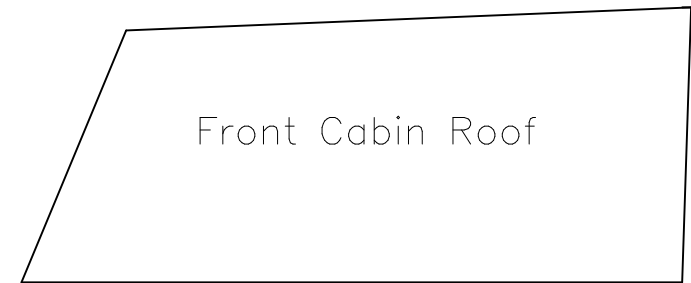
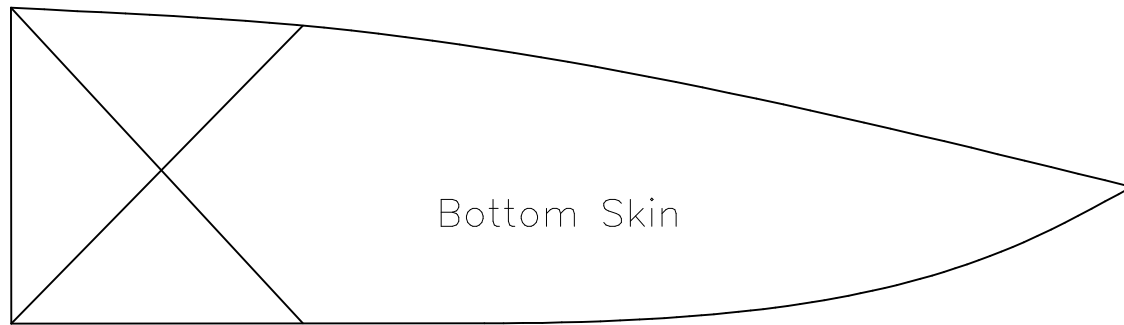
Join the two parts of the Bottom Skin drawing so that the crosses coincide before cutting from a single piece of wood.

Mermaid Sheet 5. 2 Required. 1/16" balsa

1 inch

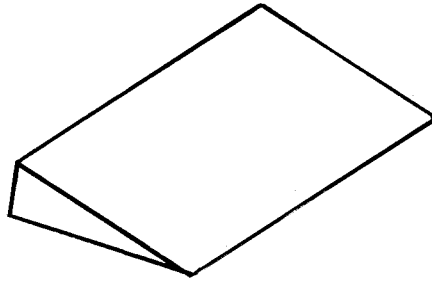


<-- Grain -->

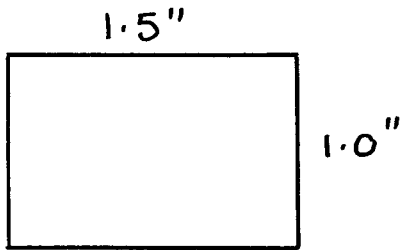


Mermaid Motor Mount

Solid Balsa



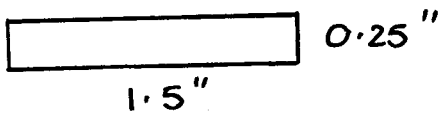
Plan View



Side Elevation



Front Elevation



Keil Kraft Mermaid Parts List

Name	Sheet No.	Thickness [ins]
Cabin Floor [1 of 2]	1	3/32
Centre Bulkhead	1	3/32
Rear Keel Piece	1	3/32
Front Keel Piece	1	3/32
Tiller Support	1	3/32
Centre Cabin [Wheelhouse] Rear Former	1	3/32
Rear Cabin - Front Former	1	3/32
Front Cabin Rear Former	1	3/32
Cabin Floor [2 of 2]	2	3/32
Bow Former	2	3/32
Front Bulkhead	2	3/32
Rear Bulkhead	2	3/32
Transom	2	3/32
Cockpit Decking	2	3/32
Rear Cabin - Rear Former	2	3/32
Cabin Frame Rear End Former	2	3/32
Transom Brace [1 of 2]	3 [1 of 2]	3/32
Deck Half [1 of 2]	3 [1 of 2]	3/32
Cabin Frame Side [1 of 2]	3 [1 of 2]	3/32
Bow Doubler [1 of 2]	3 [1 of 2]	3/32
Keel Reinforcement [1 of 2]	3 [1 of 2]	3/32
Transom Brace [2 of 2]	3 [2 of 2]	3/32
Bow Doubler [2 of 2]	3 [2 of 2]	3/32
Deck Half [2 of 2]	3 [2 of 2]	3/32
Keel Reinforcement [2 of 2]	3 [2 of 2]	3/32
Cabin Frame Side [2 of 2]	3 [2 of 2]	3/32
Side Skin [1 of 2]	4 [1 of 2]	1/16
Cabin Frame Front End Former	4 [1 of 2]	1/16
Cabin Side [1 of 2]	4 [1 of 2]	1/16
Cabin Front [1 of 2]	4 [1 of 2]	1/16
Rear Cabin Roof [1 of 2]	4 [1 of 2]	1/16
Wheelhouse Front [1 of 2]	4 [1 of 2]	1/16
Wheelhouse Roof [1 of 2]	4 [1 of 2]	1/16
Side Skin [2 of 2]	4 [2 of 2]	1/16
Cabin Frame Front End Former	4 [2 of 2]	1/16
Cabin Side [2 of 2]	4 [2 of 2]	1/16
Cabin Front [2 of 2]	4 [2 of 2]	1/16
Rear Cabin Roof [2 of 2]	4 [2 of 2]	1/16
Wheelhouse Front [2 of 2]	4 [2 of 2]	1/16
Wheelhouse Roof [2 of 2]	4 [2 of 2]	1/16
Bottom Skin [1 of 2]	5 [1 of 2]	1/16
Front Cabin Roof [1 of 2]	5 [1 of 2]	1/16
Bottom Skin [2 of 2]	5 [2 of 2]	1/16
Front Cabin Roof [2 of 2]	5 [2 of 2]	1/16
Motor Mount [triangular section]	loose	
Stern Tube	loose	length 5.25
Propellor & Prop. Shaft	loose	
Rudder Tube	loose	length 1.75
Rudder & Rudder Post	loose	
Paper Clips x 2	loose	
Acetate [for windows]	loose	
Flexible Tubing [drive coupling]	loose	
Dowel [1/8 in]	loose	length 8.9
Assembly Instructions	loose	

Not Required