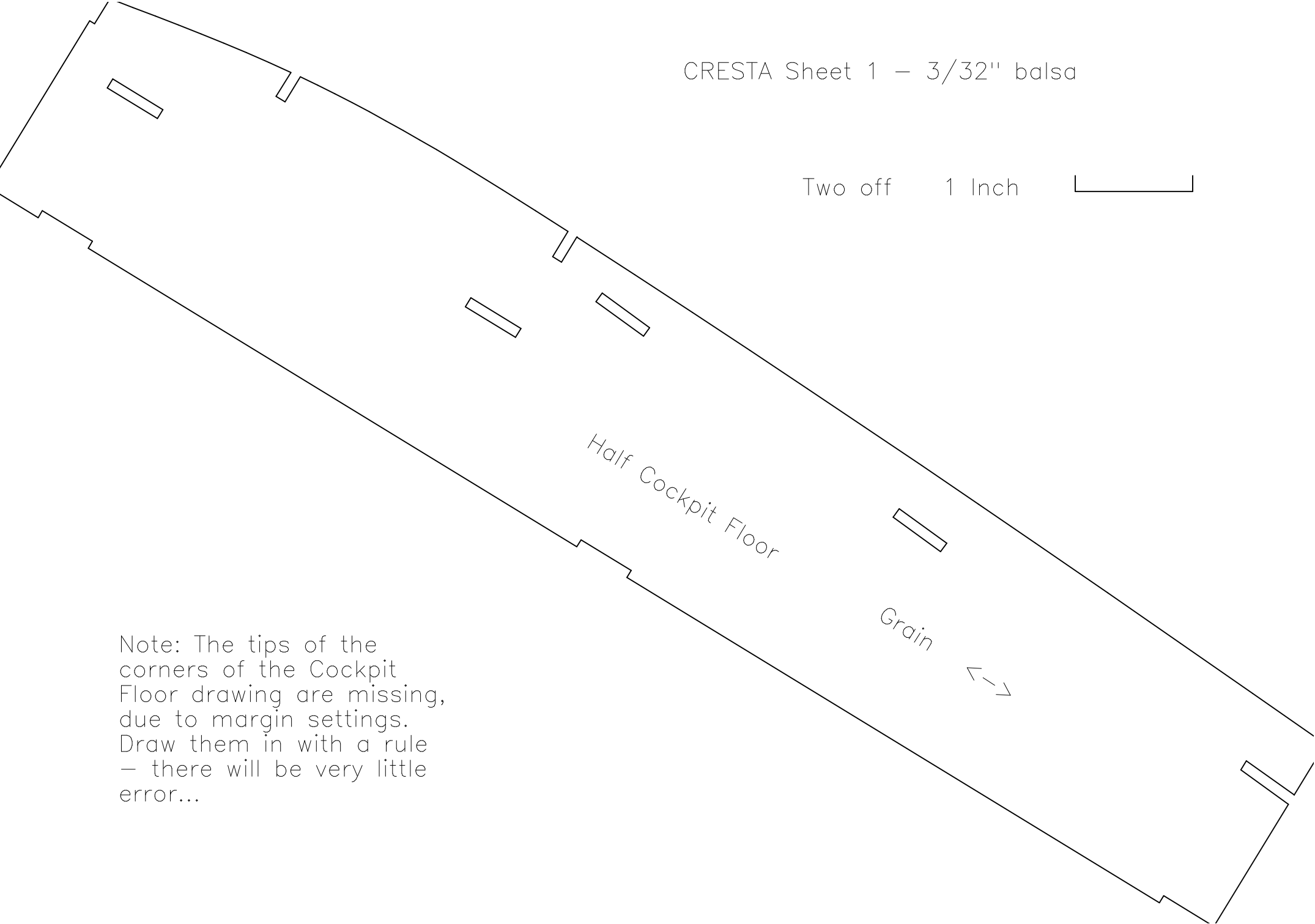


CRESTA Sheet 1 – 3/32" balsa

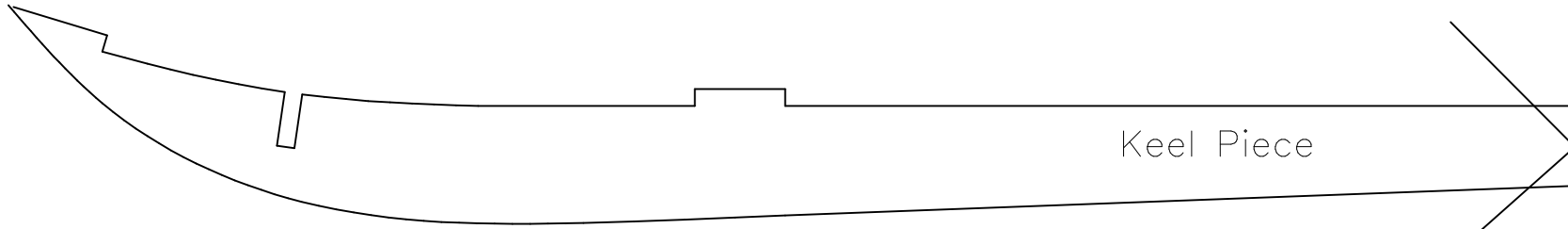
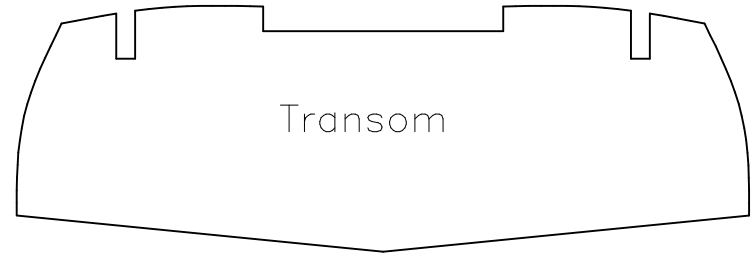
Two off 1 Inch 



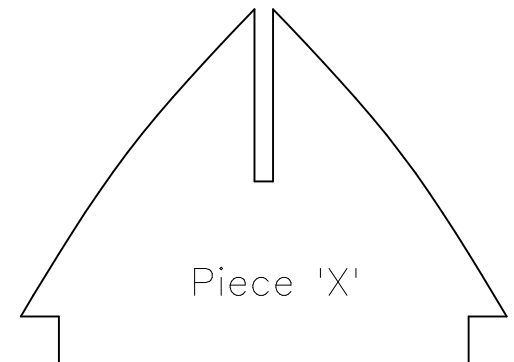
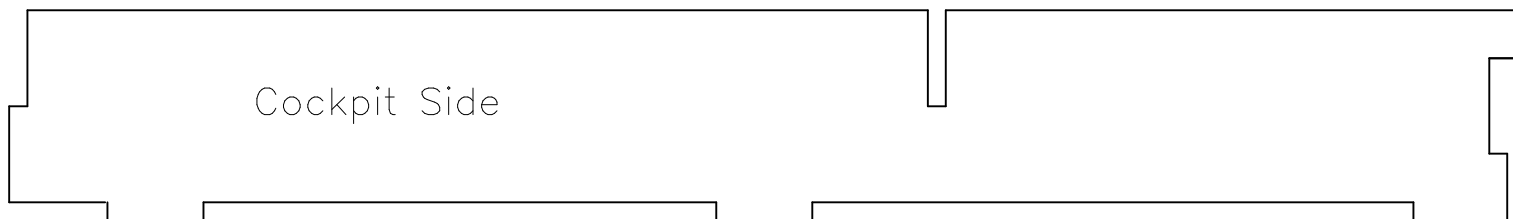
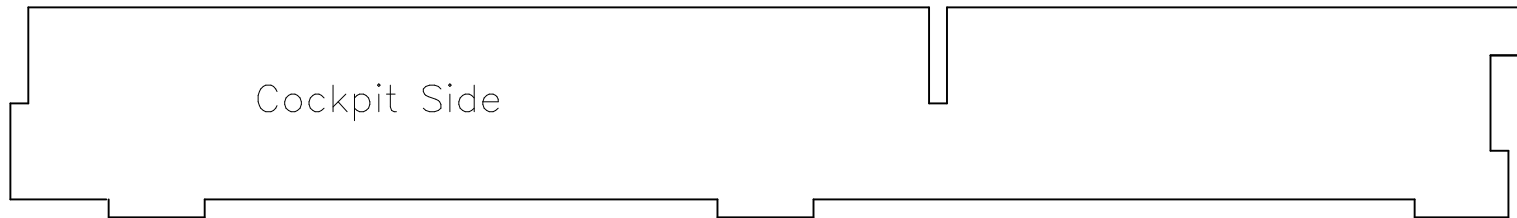
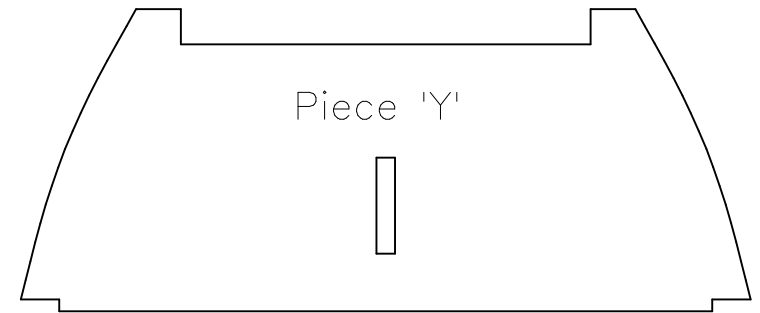
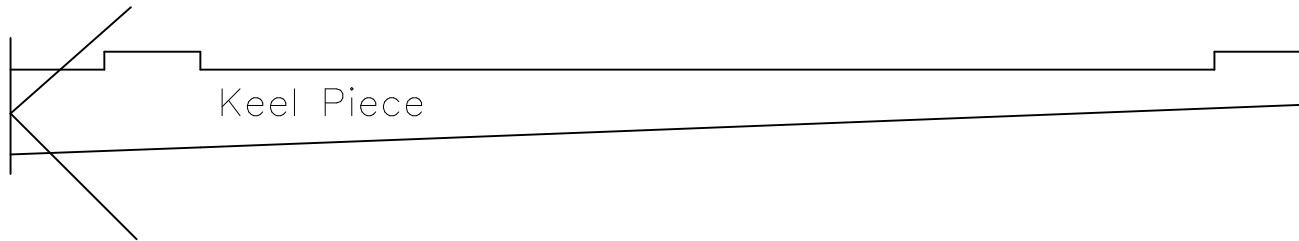
Note: The tips of the corners of the Cockpit Floor drawing are missing, due to margin settings. Draw them in with a rule – there will be very little error...

CRESTA Sheet 2 – 3/32" balsa Grain <-->

One off 1 Inch 

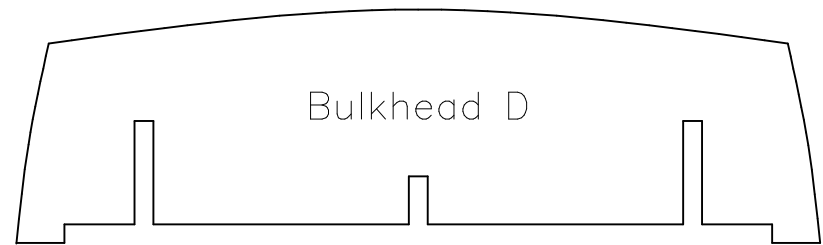
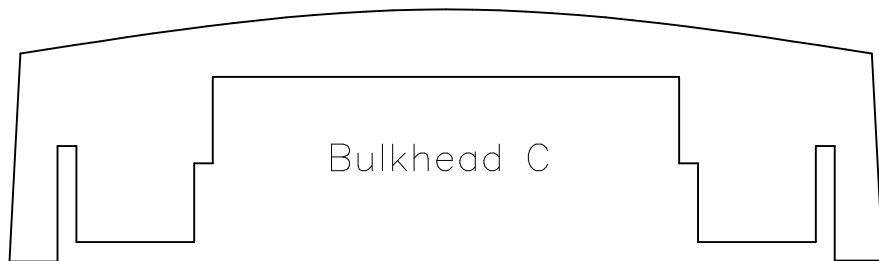
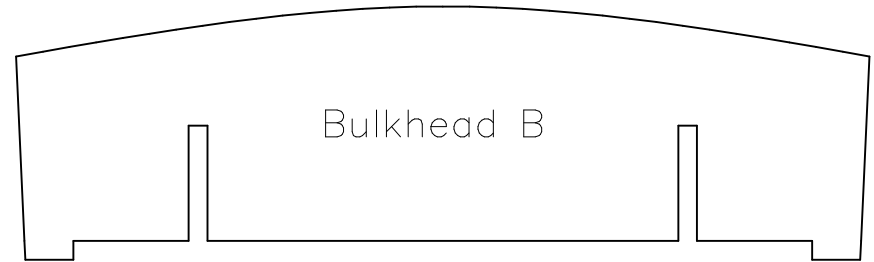
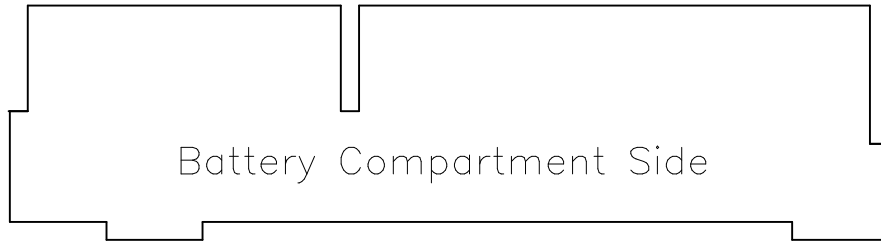
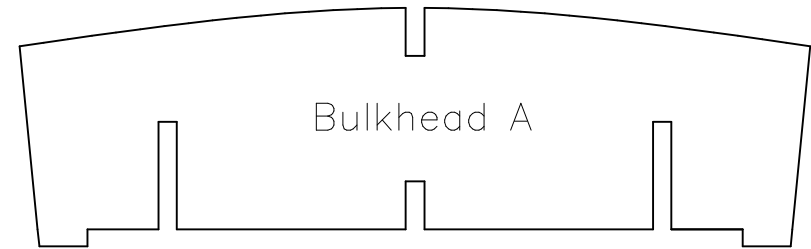
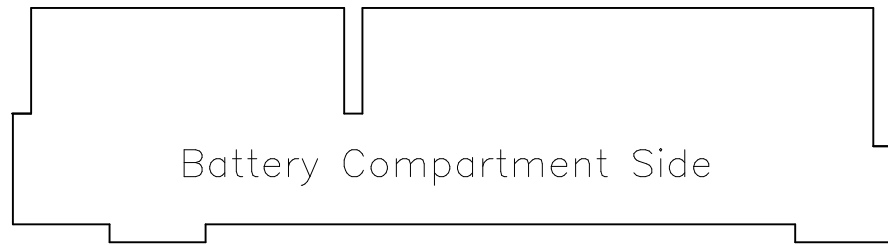


Join two parts of keel drawing at marked point, before cutting from a single piece of wood.



CRESTA Sheet 3 – 3/32" balsa Grain <—>

One off 1 Inch 

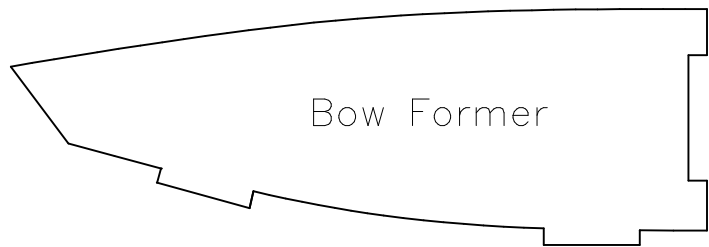


One off

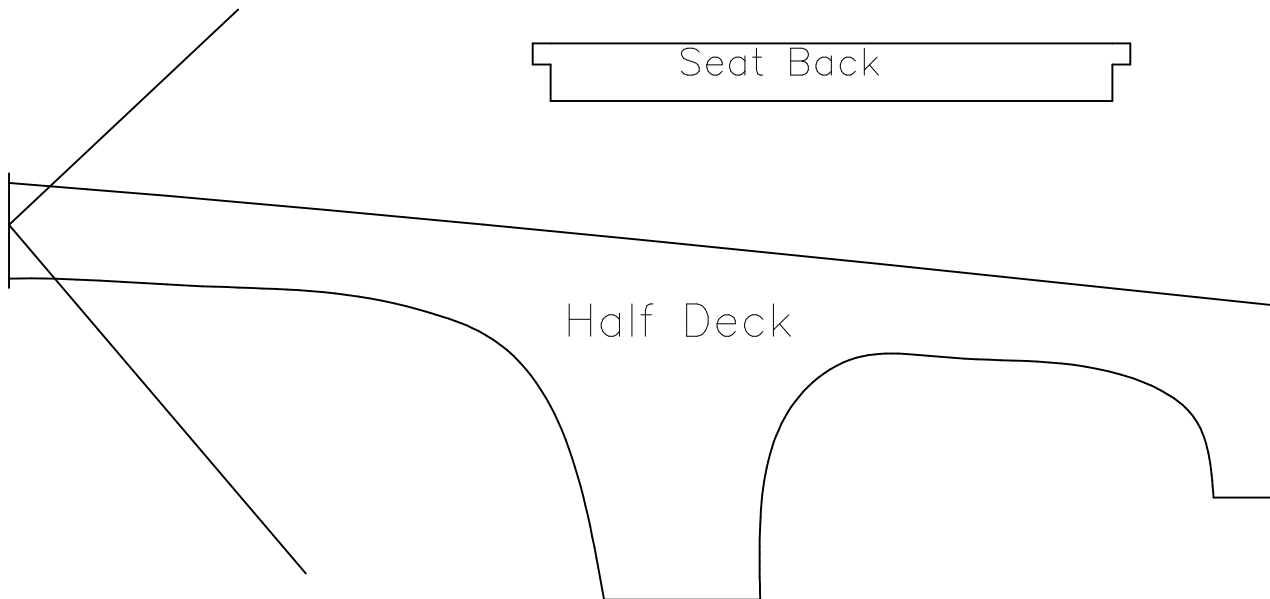
1 Inch



Seat Back



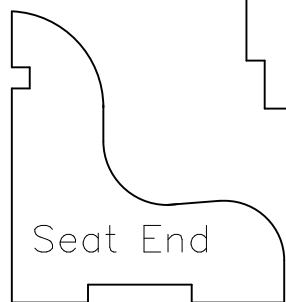
Bow Former



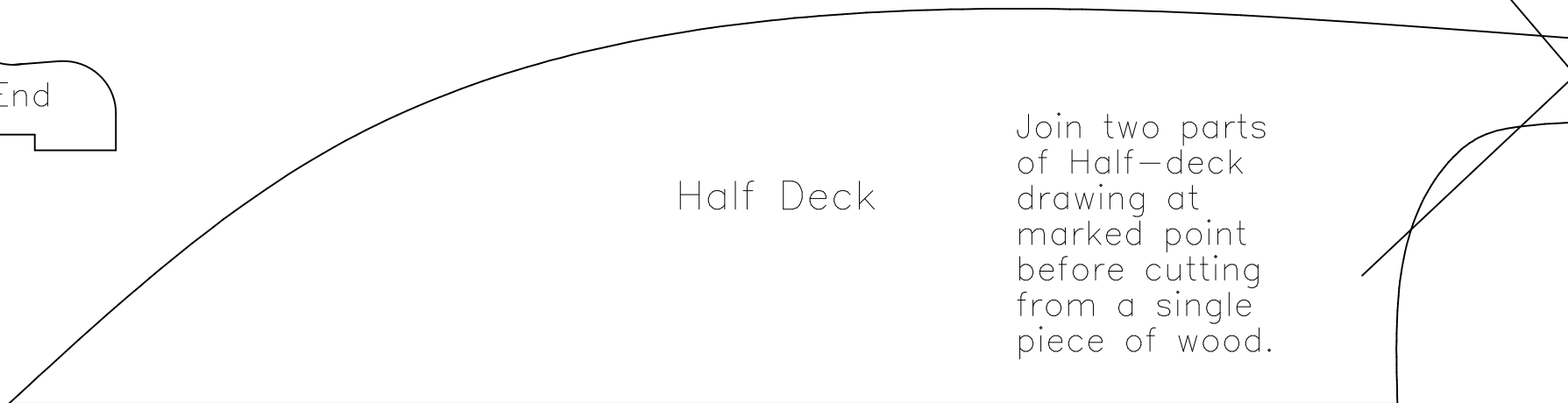
Half Deck



Transom Doubler



Seat End

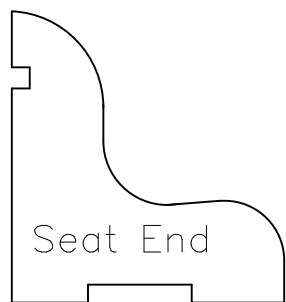
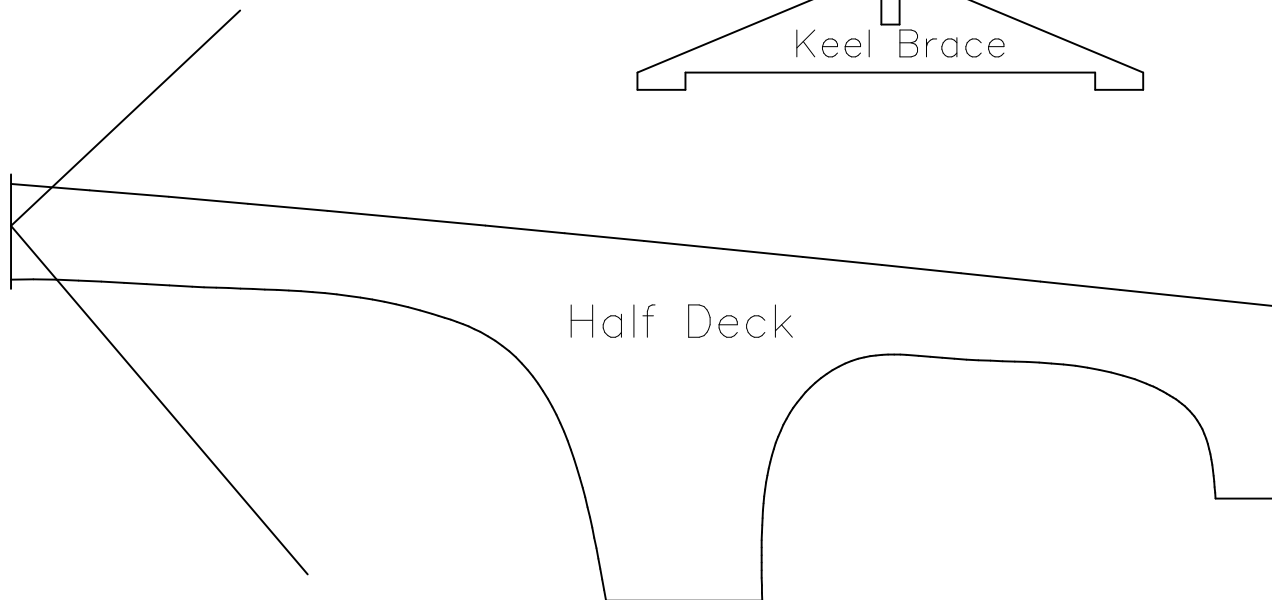
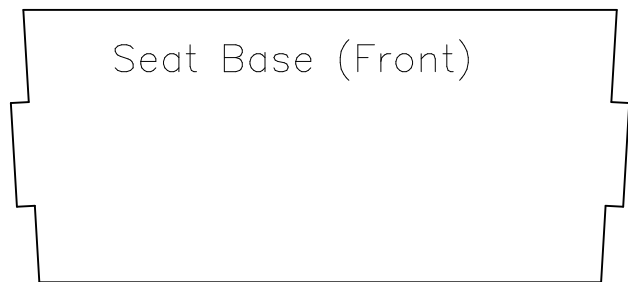
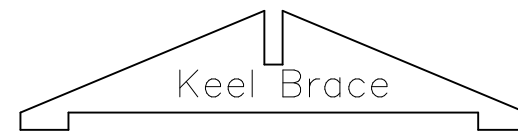


Half Deck

Join two parts of Half-deck drawing at marked point before cutting from a single piece of wood.

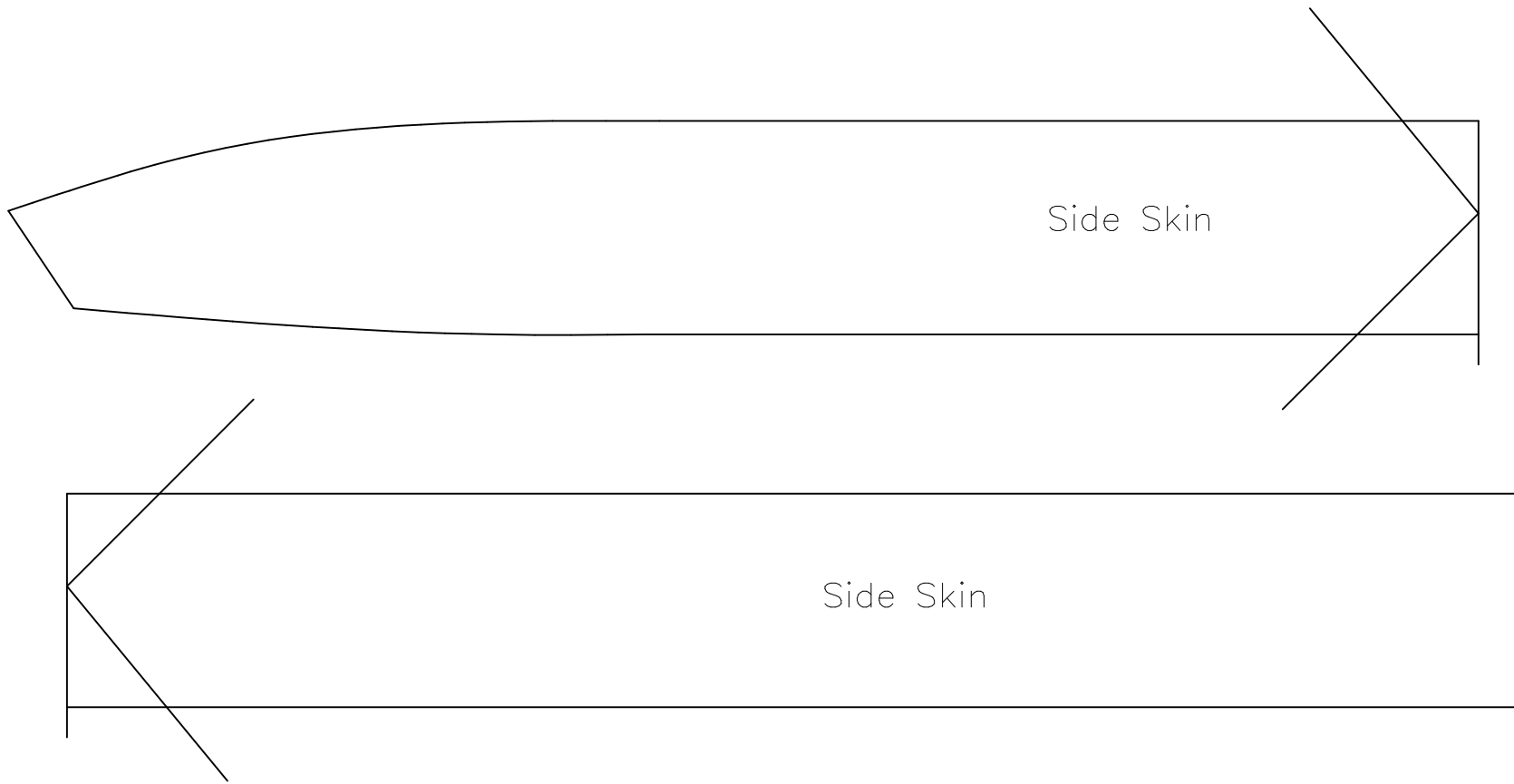
CRESTA Sheet 5 - 3/32" balsa Grain <->

One off 1 Inch 



CRESTA Sheet 6 – 1/16" balsa Grain <-->

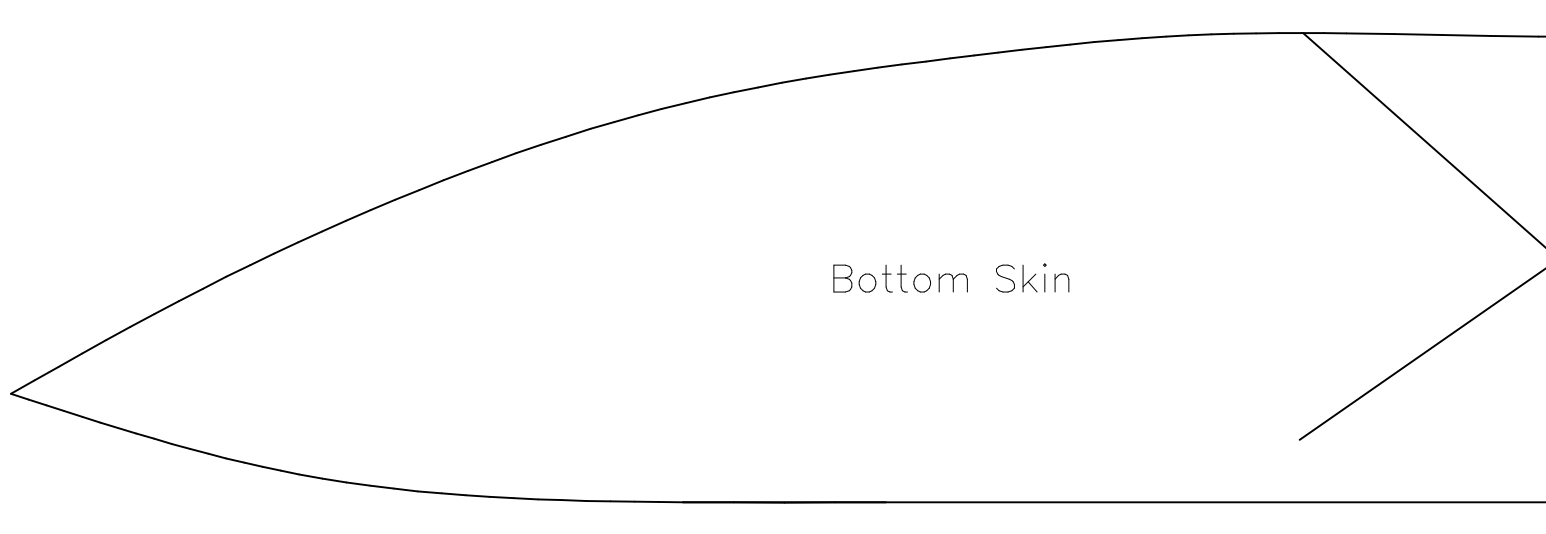
Two off 1 Inch 



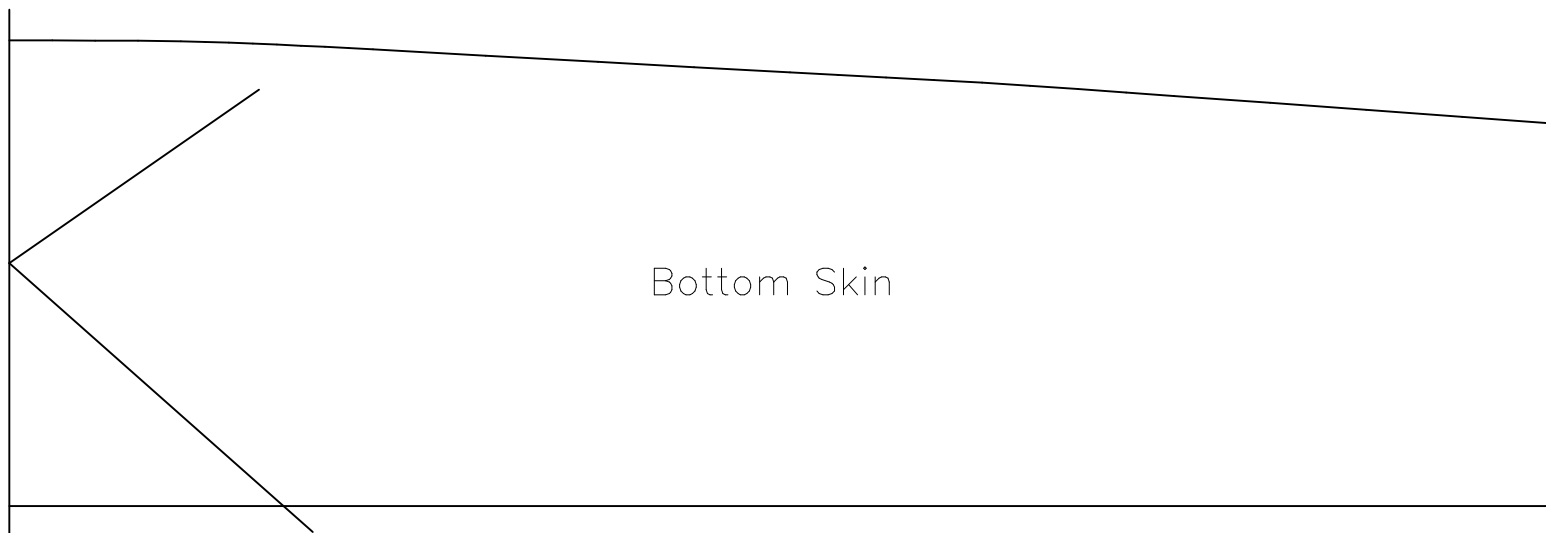
Join two parts of Side Skin drawing at indicated point before cutting from a single piece of wood.

CRESTA Sheet 7 - 1/16" balsa Grain <->

Two off 1 Inch 



Join two parts of Bottom Skin drawing at indicated point before cutting from one piece of wood.



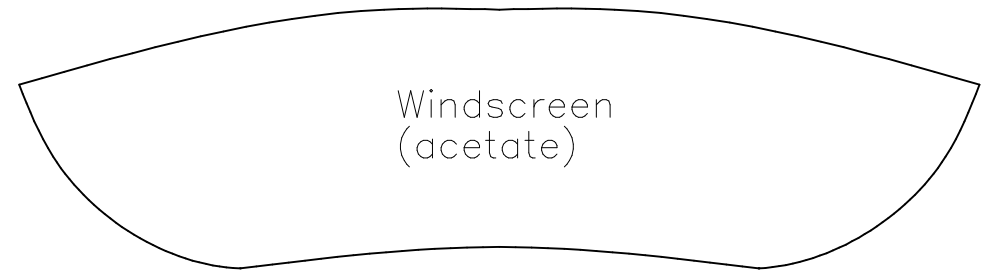
Cresta Extras

1 inch



Cresta has no Propeller, Rudder or Motor Accessories, since it is intended to be powered by an outboard motor.

Windscreen is stamped from 0.010" Acetate sheet



Seat Slats are made from $1/16'' \times 3/32''$ balsa strip, as shown on instructions. Kit has 4 lengths, each a nominal 18" long, to be cut to size.

